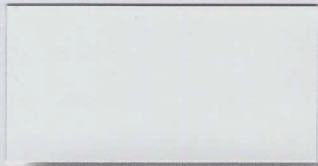


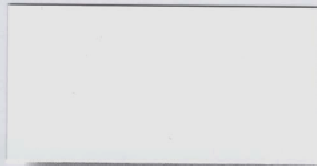


SPECTRUM
POWDER MANUFACTURING LTD.





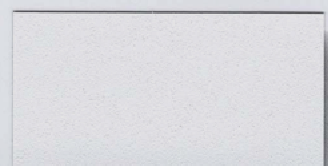
Gloss White WH90-P80



XP Gloss White WH90-XP656



Gloss White Texture WH70-TP145



White Sandtex WH10-SP173



XP ASA 70 Grey GY90-XP658



ASA 70 Grey GY80-P154



ASA 61 Grey Texture GY60-TP52



XP ASA 61 Grey Glossy GY80-XP1771



XP Oyster Grey GY80-XP1097



XP Railing Beige BE80-XP559



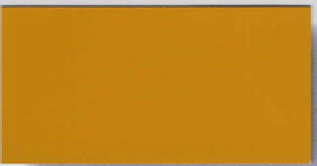
XP Sandalwood BE90-XP657



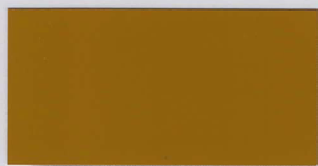
XP Mocha BE90-XP1174



Safety Yellow YL80-P7



Ring Yellow YL80-P3



Cat Yellow YL80-P471



Safety Orange RD80-P151



XP Regatta Blue BL80-XP70



XP Mirror Blue BL80-XP199



XP Stinger Blue BL80-XP934



XP Vibrant Purple BL80-XP38



Full Cure Zinc Primer GY50-ZH2358



Zinc Epoxy Primer GY80-ZE696



Zinc Free Epoxy Primer GY80-E2793



Ral 9006 White Aluminum GY80-MP2236



Gold Vein YL30-TMP2223



Copper Vein RD30-TMP2222



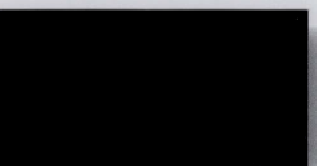
Silver Vein GY30-TMP2224



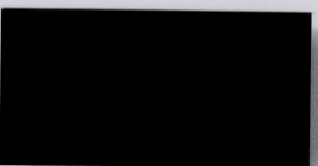
Spindle Bronze BR80-MP58



Midnight Black BK90-P25



XP Carbon Black BK50-XP63



Black Mar BK50-P1667



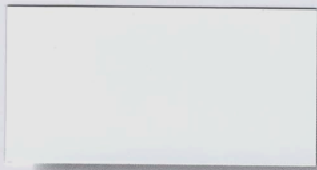
Flat Black BK10-PU2408

P = Standard Polyester Powder.

XP = Super Durable Polyester Powder.

TP = Textured Polyester Powder.

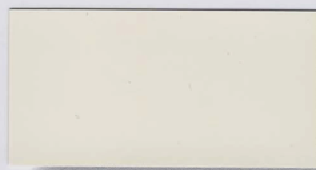
PU = Urethane Powder.



Mirror White WH90-P1625



XP Off White WH90-XP2311



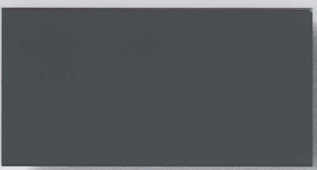
XP Furniture White WH90-XP1152



XP Railing Almond BE80-XP817



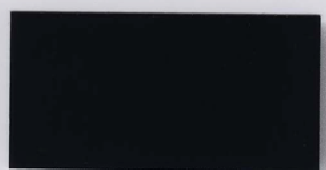
ASA 61 Grey GY60-P32



S/G ASA 49 Grey GY50-P495



XP Pebble Grey GY80-XP169



XP Charcoal Grey GY90-XP814



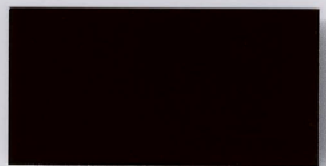
XP Metro Brown BR80-XP464



XP Rideau Brown BR60-XP643



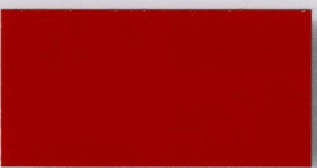
XP Chestnut Brown BR80-XP1423



XP Chocolate Brown BR80-XP1366



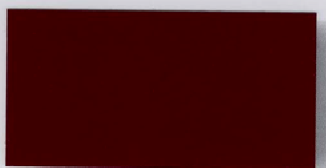
Gloss Orange RD80-P150



Fire Red RD90-P75



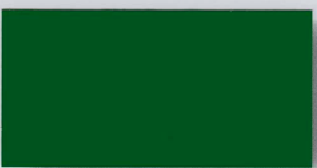
XP Red Baron RD90-XP991



Burgundy RD80-P121



XP Seafoam Green GN80-XP1472



XP Signs Green GN90-XP167



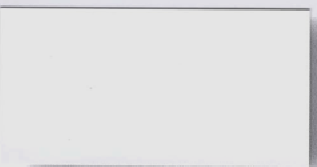
XP Railing Green GN80-XP12



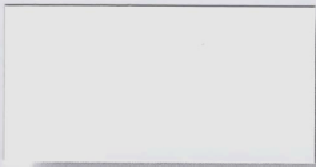
XP Equipment Green GN80-XP105



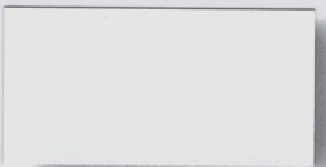
Sparkle Silver GY80-MP2794



S/G Polyester Clear CL50-P2795



Urethane Clear CL90-PU2376



Anti-Graffiti Clear CL90-PU2796



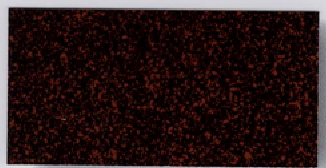
Skillet Grey Metallic GY10-SMP10



Oil Rubbed Bronze GY10-SMP1227



Red Brown Speckle BR10-SSP93



Black Rust BR10-SSP937



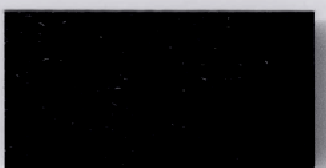
Black Minitex BK30-SP157



Black Sandtex BK10-SP9



L/G Black Texture BK10-TP114



Gloss Black Texture BK80-TP19

SP = Sandtex Polyester Powder.

MP = Metallic Polyester Powder.

ZE = Zinc Epoxy Powder.

ZH = Zinc Hybrid Powder.



- The samples illustrated have been matched as closely as possible. Please contact Spectrum Powder for an actual powder coated sample panel.
- Technical Data Sheets and MSDS are available at www.spectrumpowder.com
- All the powders illustrated on this card are held in stock and are available for same day shipment. We also market 188 glossy super durable XP RAL powders available in a variety of package sizes. If the XP RAL powder is not in stock we will make it and ship (25 kilo minimum) in 2 – 3 days.
- Custom Colours are also available. We offer a free colour matching service. Just forward a panel and we will return panels of our match typically within 2 – 3 days.
- All the products illustrated are suitable for interior and exterior applications with the exception of the primers which require a UV stable top coat for any exterior end use.
- We recommend a zinc (steel) or epoxy (aluminum) primer under any Sandtex or Texture powder intended for an exterior application.
- We recommend a protective clear coat for all metallic powders to help limit oxidation.
- Please consult Spectrum Powder with any specific application questions for any of our powders.



SPECTRUM
POWDER MANUFACTURING LTD.

3956 – 64th Avenue S.E., Calgary, Alberta, Canada, T2C 2B4

Tel: (403) 279-9040

Fax: (403) 279-9073

www.spectrumpowder.com